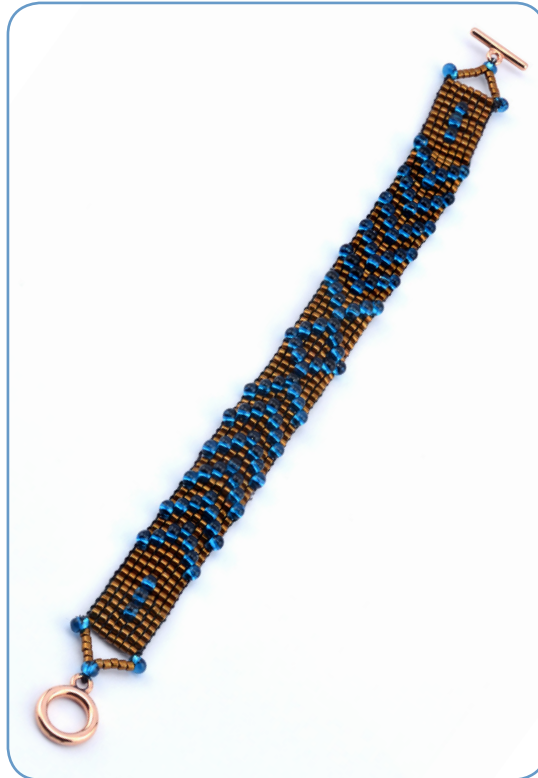


DESIGN WORKSHOP

BLUE DROP FLECHAS LOOMWORK CUFF

By: Leslie Rogalski



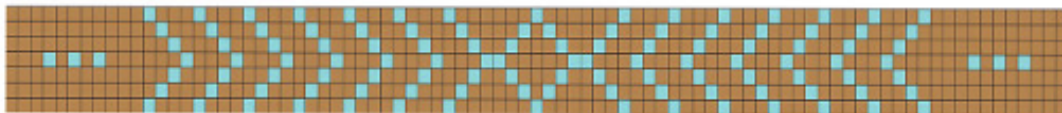
Materials

- 1 Beadalon Jewel Loom - 206S-064
- Beadalon WildFire, .006 Black Beading Thread
- 1 Beadalon copper toggle clasp set - 323P-004
- Beadalon Bead Stringing Glue -215A-020
- Beadalon Hard Beading Needle- JNEEH
- Beadalon 2.25" Big-Eyed Needle (optional for finishing warp threads)-JNEED2
- Beadalon Scissors- 211A-002
- Beadalon Flush Cutters -202F-020

You Also Need:

- 2.5g Size 11° Miyuki Delica Cylinder Beads, DB-462 Metallic Copper
- 116 Miyuki size 3.4mm drop beads, Transparent Teal

Pattern - Figure 1.



WARPING THE LOOM

1. Follow the directions that come with the Jewel Loom to warp 8 threads, for a cuff that will be 7 beads wide.

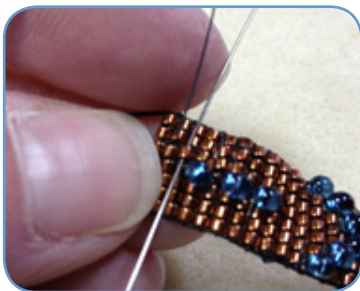
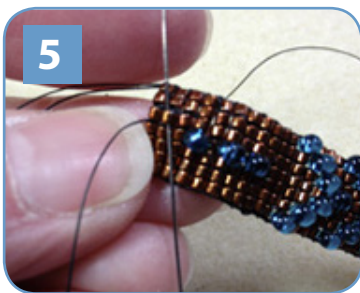
WEAVING THE PATTERN

2. Cut a comfortable length of thread and tie one end in a half hitch on an outside warp thread (left side for righties, right side for lefties) 2 ½" in from one warp coil end.

3. Follow the chart (see FIGURE 1 above) using copper size 11° cylinder beads and teal drop beads. The pattern is 7 beads wide by 85 rows. Make sure the drops are fully popped up between the warp threads. Pass your needle and thread carefully over the warp threads through all the beads.

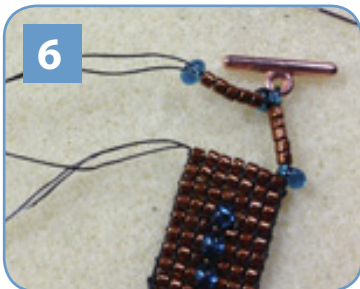
FINISHING THE WARP THREAD

4. Cut the beadwork off the loom close to the knob as manufacturer instructions direct. Cut all looped ends so there are all single warp thread ends.



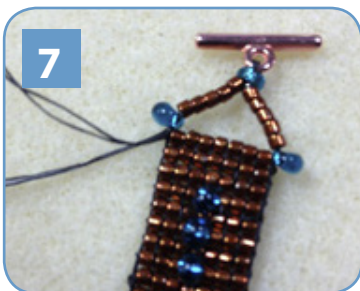
5. Working at one end of the cuff, weave all the remaining warp threads into the beadwork except for a pair at each corner: One by one, string each warp thread onto your beading needle (or big-eyed needle) and weave in and out of the vertical line of beads.

To lengthen this cuff, add more Delica beads in Step 6 to increase the clasp allowance.

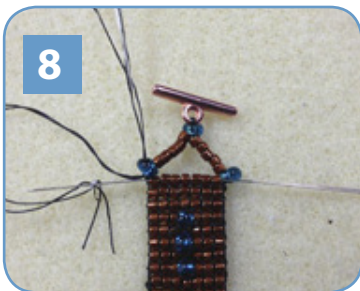


CLASP

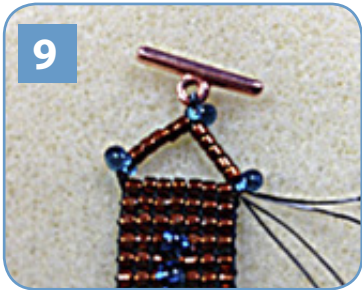
6. Use the remaining pairs of threads to attach the toggle. Thread your needle on one pair of threads at one corner. String 1 drop, 5 cylinder beads and 1 drop. String the toggle bar loop. Pass back through the last drop just strung. String 5 cylinder beads and 1 drop bead. Pull the beads snug.



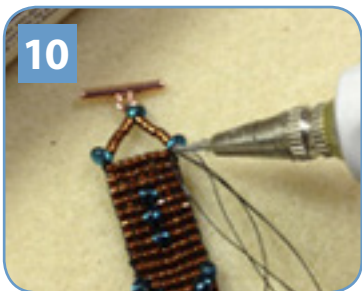
7. Tie a secure knot between the beaded threads and the remaining pair of warp threads at the corner.



8. String a needle on one pair of threads and pass back through the first row of loom-woven beads.



9. String a needle on the remaining pair of threads and pass back through all toggle beads and the toggle ring as strung in Step 6, exiting to meet the threads exiting the first row of woven beads; tie a secure knot between those two pairs of threads.



10. Dab both corner knots with Beadalon Bead Stringing Glue. Let dry. Use the wire cutter to carefully trim excess thread close to knots. Dab again with glue using the glue tube tip to mash the thread ends neatly against the knot.