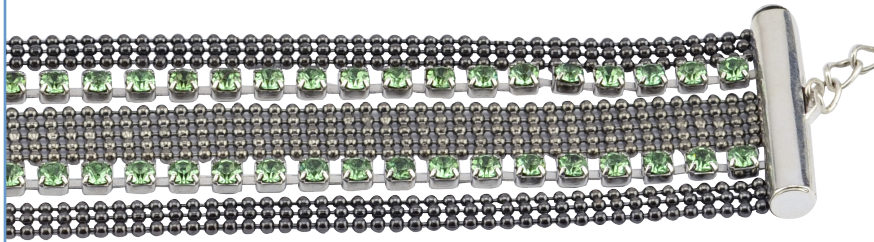


DESIGN WORKSHOP

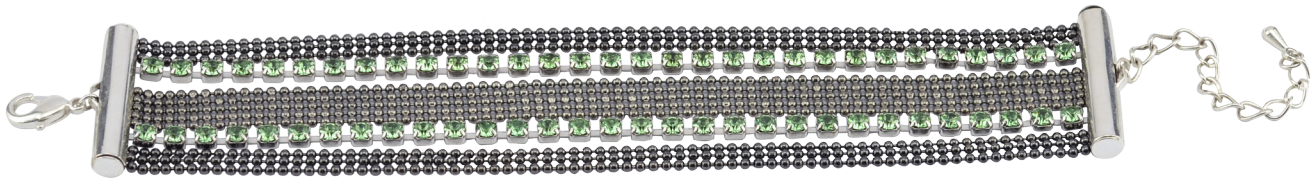
CUP CHAIN BALL CHAIN BRACELET

By: Meredith Roddy



Materials

- 324B-062 Extension Clasp, 2 In (5.08 Cm), Lobsterclaw, Slideconnector .79 In (20 Mm), Silver Plated Electroplated Coating, 1Set
- 2X 6" Pieces Of 3Mm Cup Chain
- 2X 6" Pieces Of Triple Ball Chain
- 1X 6" Piece Of 5 Ball Chain



1. Slide into one tube the following: 1 triple ball chain, 1 cup chain, 1 5 ball chain, 1 cup chain and 1 triple ball chain. Close the tube.

2. Repeat on the other tube.