

## DESIGN WORKSHOP

### CLOUD 9 NECKLACE

By: Sara Ellis



### Materials

- Flat, Large Bracelet, Silver Plated Memory Wire – 347B-070
- 26 Gauge Natural Artistic Wire – AWS-26-10-30YD
- #6 Light Pink 100% Silk Beading Cord – 106B-100
- 14 4mm Gold Color Jump Rings – 314A-004
- 4 Gold Color Wire Guardians – 325A-002
- Gold Color EZ-Lobster Clasp (medium) – 315A-221
- 6.7mm Silver Tone Eye Pins – 310B-113
- Beadalon Bead Stringing Glue – 215A-020
- 63 3mm Pearls
- 6 6mm Pearls
- 50 4mm Pearls
- Tools:
  - Beadalon Designer Memory Wire Shears – JTMEMCUT1
  - Beadalon Designer Sparkle Round Nose Pliers – 201A-104
  - Beadalon Designer Sparkle Bent Chain Nose Pliers – 201A-103
  - Beadalon Designer Flush Cutter – 202E-001
  - Beadalon Designer Curved Squeeze Scissors – 211E-004
  - Beadalon Knotter Tool – JTECONKNOT or Beadalon Knot-A-Bead Tabletop Knotter – 2165-275

1. Using Memory Wire Shears, cut Flat, Large Bracelet, Memory Wire into 2.5" sections. You will need 7 sections total.

2. Using Round Nose Pliers, roll the ends of the Flat Memory Wire back towards the length of the Memory Wire, creating a loop.

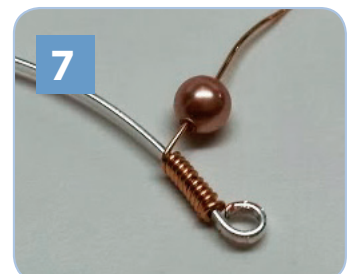
3. With a workable length of 26 gauge Artistic Wire (a little less than arm's length), begin wrapping a section of Flat Memory Wire. Start as close to the loop as possible.

4. Wrap the Artistic Wire around the Flat Memory Wire 10 to 12 times. Use your Chain Nose Pliers to adjust the wire so that it is lined up nicely.

5. Using the Flush Cutter, snip the tail of the wire and gently flatten the end with Chain Nose Pliers, making sure there is not a sharp edge sticking out.

6. With the working end of the Artistic Wire, thread on one 3mm pearl.

7. Slide the pearl down so that it rests against the Flat Memory Wire.



8. With the Artistic Wire exiting the pearl, continue to wrap the wire around the Flat Memory Wire, securing the pearl in place against the Memory Wire.

9. Wrap the Artistic Wire three additional times.

10. Add another 3mm pearl as you did in steps 6-8.

11. Using your Chain Nose Pliers, adjust the Artistic Wire as you go for uniformity. Gently squeeze your pearls together to ensure an equal amount of space between them.

12. Continue adding pearls as you wrap the Memory Wire until you have 9 pearls wrapped against the Memory Wire.

13. Finish the wrapping the same as you did when you began. As you add the last pearl, wrap the wire 10-12 times bringing it to the edge of your loop on the Memory Wire.

14. Using your Chain Nose Pliers, attach 4mm Jump Rings to each looped end of the Memory Wire.

15. Repeat steps 3-14 on each cut section of flat Memory Wire. You should have 7 finished sections.

16. Thread a 6mm pearl onto a .7mm Eye Pin.

17. Hold the Eye Pin vertically so that the pearl is resting against the loop. Using your Chain Nose Pliers, bend the straight end of the pin into a 90-degree angle as close to the pearl as possible.

18. Using the Flush Cutter, cut the pin, leaving approximately 1/4" of pin.

19. Using Round Nose Pliers, grasp the end of the pin and roll the pin back towards the pearl, creating a loop. You should now have two loops on either end of the pearl. (RG7.jpg)

20. Using Chain Nose Pliers, attach the open end of the EZ-Lobster clasp to one 4mm Jump Ring on a section of your prepared Memory Wire.

21. Attach the clasp side of the EZ-Lobster clasp to another section of prepared Memory Wire at the 4mm Jump Ring. (RG8.jpg)

22. Using Chain Nose Pliers, connect the remaining sections of Memory Wire to the prepared 6mm pearls, connecting the jump rings to the loops on either end of the pearls.

23. Alternating Memory Wire sections and 6mm pearls, your necklace should look like image 23.

24. Using 100% Silk Beading Cord, double knot the end of your cord, leaving a 3-4" tail.

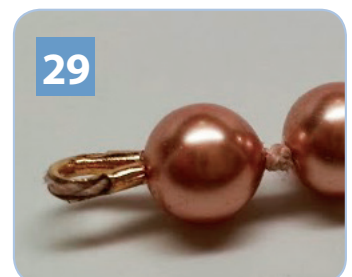
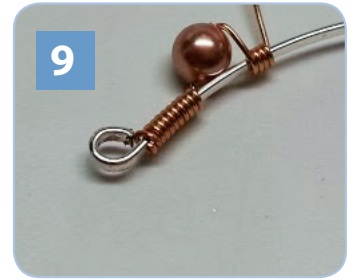
25. Thread on 3 4mm pearls and a Wire Guardian. Slide them to the end of your cord, loosely. The pearls should not rest against the knot, leaving you enough slack to work with.

26. With the working end of your cord, thread back through the last pearl you added, pulling the pearl up against the Wire Guardian.

27. Tie an overhand knot with your working thread and the tail, pulling the knot tight against the pearl.

28. With the working end of your cord, thread back through the second pearl you added, pulling the pearl up against your overhand knot.

29. Tie an overhand knot with your working thread and the tail, pulling the knot tight against the second pearl.



30. With the working end of your cord, thread back through the last pearl you added, pulling the pearl tight against the previous overhand knot.

31. With the working end and the tail both now exiting the last pearl, separate the cords, creating a small opening between them.

32. Apply a tiny amount of Bead Stringing Glue between the cords, into the opening of the pearl. This will glue the two cords together inside the pearl.

33. Wipe away any glue that may be on the pearl and allow the glue to dry.

34. Once the glue has dried, trim the tail with scissors as close to the pearl as possible, being careful not to cut your working cord.

35. Using your Knotter Tool or Knot-A-Bead, continue to hand knot 25 pearls onto your cord.

36. Thread on three additional 4mm pearls and a Wire Guardian. Slide the pearls against the last knot on your cord, leaving enough room to hand knot two knots between the pearls.

37. Pull the Wire Guardian up against the last pearl and thread the working cord back through the last pearl and tie a half-hitch knot between the last and second to last pearl.

38. Thread the working cord back through the second to last pearl and tie a half-hitch knot between the pearls. \*You may add a tiny drop of Beading Glue to this knot for extra security, but it is not necessary. Allow to dry.

39. Thread the working cord back through the next pearl. It will exit the pearl next to a previously made knot.

40. Pull the knotted strand and working cord apart as you did in step 31. Apply a tiny amount of Bead Stringing Glue between the cords, into the opening of the pearl. Wipe away and glue that may be on the pearls and allow to dry.

41. Once the glue has dried, trim the cord with scissor as close to the pearl as possible, being careful not to cut your knotted strand.

42. Repeat steps 24-41 to make an additional knotted strand of 19 4mm pearls.

43. You should now have two strands of hand knotted pearls, one strand of 31 and a strand of 19.

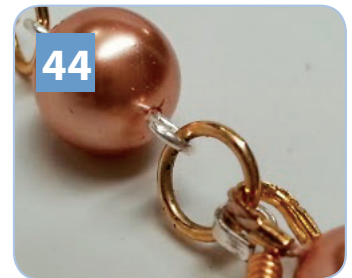
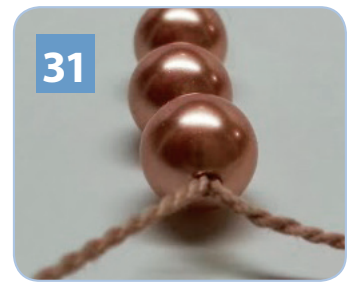
44. Using your Chain Nose Pliers, attach one end of the 31 pearl strand to the bottom Jump Ring of the first 6mm pearl down from the EZ-Lobster Clasp.

45. Attach the opposite end of the strand to the bottom Jump Ring of the 6mm pearl on the opposite side of the necklace.

46. Using your Chain Nose Pliers, attach one end of the 19 pearl strand to the bottom Jump Ring of the next 6mm pearl down.

47. Attach the opposite end of the strand to the bottom Jump Ring of the 6mm pearl on the opposite side of the necklace.

49. Your finished necklace should look like main image.



**Create an opposite color way of this necklace using:**

- \*Flat, Large Bracelet, Gold Color Memory Wire – 347A-070
- \*26 Gauge Tinned Copper Artistic Wire – AWS-26-TC-30YD
- \*14 4mm Gold Color Jump Rings – 314B-004
- \*4 Silver Tone Wire Guardians – 325B-002
- \*Silver Tone EZ-Lobster Clasp (medium) – 315B-221
- \*6 .7mm Silver Tone Eye Pins – 310A-113