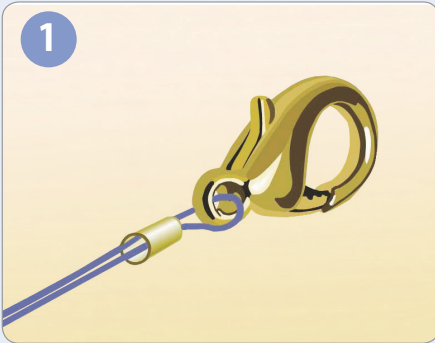


# Beadalon®

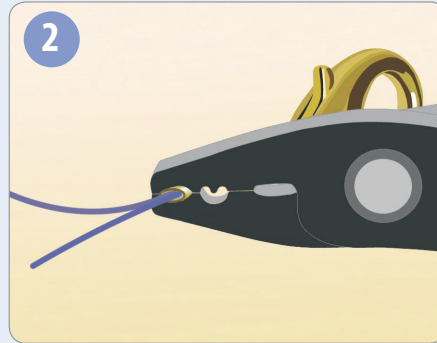
## Crimping Instructions



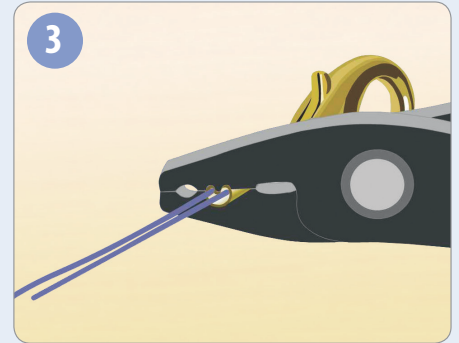
### CRIMPING INSTRUCTIONS



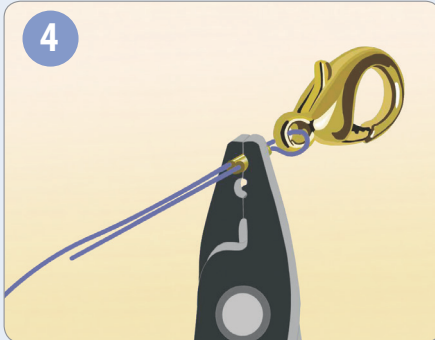
1 Feed one Crimp Bead onto the Beadalon wire, then loop it through a Clasp and back through the Crimp. Be sure wires are side by side, not crossed.



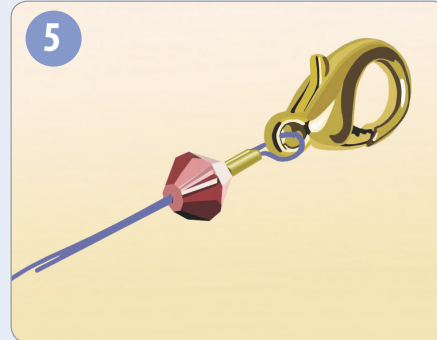
2 Place the crimp in the OUTER jaw of the Crimp Tool, make one firm compression. This will shape the Crimp into an oval, keep the wires parallel.



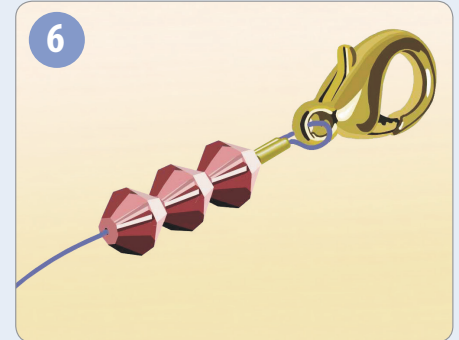
3 Place the Crimp Bead into the crescent-shaped groove (inner jaw) of the Crimp Tool. Make one firm compression.



4 Place the Crimp into the tool's semi-circle groove (outer jaw), turn it 90° and make another compression until the Crimp Bead is nicely rounded.



5 String the first bead, then cut the excess wire with the Beadalon Flush Cutter.



6 String the remaining beads and repeat steps 1, 2, and 3 on the opposite end to attach the other side of the clasp to complete the design.

