

DESIGN WORKSHOP

FATHER TIME PENDANT

By: Cindy Becker



Materials

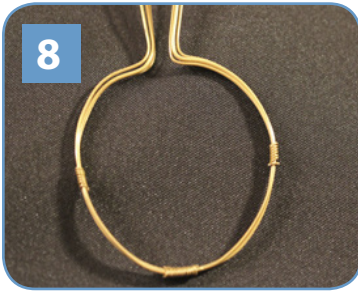
- 10" Beadalon 20G Antique Brass wire 180R-020
- 18" Beadalon 22G Antique Brass wire 180R-022
- 12" Beadalon 26G Antique Brass wire 180R-026
- Beadalon Chain nose pliers 201A-101
- Beadalon Wire cutters 202A-105
- Beadalon Bale Maker 201A-230
- Beadalon Round nose pliers 201A-104
- Michaels Crafts Bead Landing 18pc. Stamp Metal Assortment (clock parts) 4 00100 99388 0
- Ruler
- Beadalon G-S Hypo Glue JA-GSHYPO

Tips: Clock hands can also be attached to earring wires to make dangle earrings to match. Since the wire has gold and the stamp a silver tone, you can use either set of hands, (gold or silver), included in the package. Can use any one of the clock assortments to make this piece, (shown with Roman Numerals).

1. Cut (1) 7" and (1) 3" piece of 20G wire
2. Cut (2) 9" pieces of 22G wire
3. Cut (12") piece of 26G wire
4. About 1/4" from end, make 90 degree bend in 26G wire.
5. Find center of the wire packet and place the 26G wire hook at that location.
6. Wrap the 26G wire around the bundle 10x's. Each wrap should be tight and touching.
7. Approximately 1 1/2" from the center wrap, repeat previous step. Do this on either side. You should have 3 wraps.

6

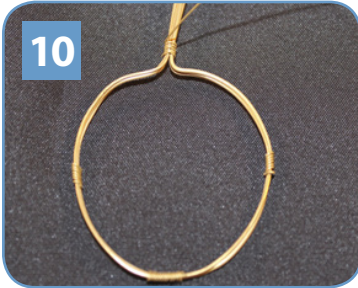




8



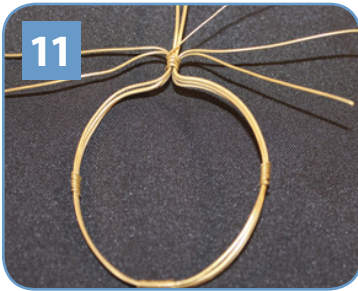
16



10



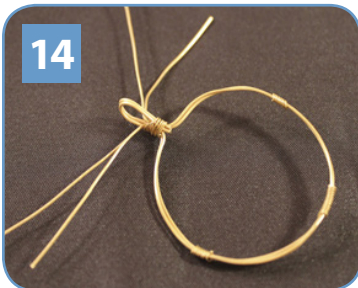
17



11



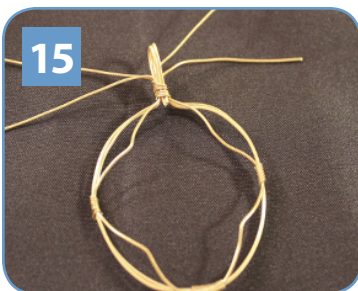
18



14



19



15



22

8. Begin to shape the wire around the silver tone clock stamp.

9. Where ends meet at top, bend upward 90 degrees.

10. Make a hook on end of 26G wire.

11. Hold wires together, (where the 90 degree bends meet), and place the hook around the wire bundle staying close to the top of the metal stamp. Make 6 tight wraps with the 26G to hold the wires together. DO NOT TRIM EXCESS 26G.

12. Split 4 wires that are bent upward, (2 to each side), leaving (2) 20G wires standing straight up in the center.

13. Wrap 2 center wires around smaller side of the Baler tool. This is the start of your bale. Use Chain nose pliers and make slight bend on end of bale wires.

14. Wrap 26G wire around the bottom of the bale. This is the back of your pendant.

15. Lay pendant face down on table. Use chain now pliers and gently pull all 4 corners to form cage.

16. Pop silver stamp into the design, keeping 12 o'clock at the top. Use Chain nose pliers and pull 4 corners up over front of pendant.

17. Use Round nose pliers to make curly design at top of clock, (giving it an effect of springs).

18. Using the remaining 3" piece of 20G wire, take Round nose pliers and make a small loop on end. Using Chain nose pliers roll the loop a few times.

19. Bend long end of the wire upward.

20. From the back, feed long end of the wire through the hole in the center of the silver stamp.

21. Feed clock hands onto this wire and trim excess wire to 1/2".

22. Using Round nose pliers make small loop on end of wire. Using chain nose roll wire into a small swirl and press it tightly against the clock hands.

23. Position clock hands at desired time and dab a small amount of glue between the clock hands and the swirl. Repeat on back. (May also want to put small dab under clock hands where they touch the silver stamp to further secure.)