

DESIGN WORKSHOP

QUILT BOX NECKLACE

By: Leslie Rogalski



Materials

- * found at Michael's, plus all Beadalon products)
- Toho size 11 round seed beads in the following colors:
- 16g Matte Black (Color 1)
- 4g Bronzed Gold (Color 2)
- 6g Matte Blue Green (Color 3)
- 4g Matte Maroon (Color 4)
- 4g Matte Olive Drab (Color 5)
- Bead Landing glass cube beads to match any color seed bead, 6mm max.
- Beadalon beading wire, 19 strand gold color, .015 (JW14G-0)
- 1 Beadalon Jewel Loom (206S-060)
- Beadalon WildFire beading thread .15mm black, size .006 (161T-004)
- Beadalon Loom beading needle (701S-500)
- Beadalon gold colored clasp and jump rings (323A-004)
- 2 Beadalon gold colored Wire Guardians (325A-002)
- 2 Beadalon 2mm crimp tubes (JFCT-1G)
- 2 Beadalon gold colored crimp covers (349A-008)
- Beadalon wire cutter (JPN1)
- Beadalon crimp pliers (JTCRIMP1)
- Scissors

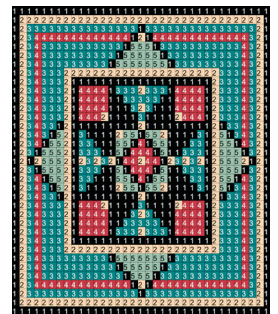
WARP:

Warp 36 threads for a panel 35 beads wide.

Start weaving 4" in from the coil. This allows enough excess warp thread at the completion to finish off the thread ends easily and have fringe. Weave top to bottom.

Color and stringing key: (Number of beads to string)bead color. (35)1 = 35 of Color 1

- Row 1 (35)1
- Row 2 (1)1, (33)2, (1)1
- Row 3 (1)1, (1)2, (15)3, (1)1, (15)3, (1)2, (1)1
- Row 4 (1)1, (1)2, (1)3, (13)4, (1)1, (1)2, (1)1, (13)4, (1)3, (1)2, (1)1
- Row 5 (1)1, (1)2, (1)3, (1)4, (11)3, (1)1, (3)5, (1)1, (11)3, (1)4, (1)3, (1)2, (1)1
- Row 6 (1)1, (1)2, (1)3, (1)4, (10)3, (1)1, (5)5, (1)1, (10)3, (1)4, (1)3, (1)2, (1)1
- Row 7 (1)1, (1)2, (1)3, (1)4, (9)3, (1)1, (7)5, (1)1, (9)3, (1)4, (1)3, (1)2, (1)1
- Row 8 (1)1, (1)2, (1)3, (1)4, (3)3, (21)2, (3)3, (1)4, (1)3, (1)2, (1)1
- Row 9 (1)1, (1)2, (1)3, (1)4, (3)3, (1)2, (19)1, (1)2, (3)3, (1)4, (1)3, (1)2, (1)1
- Row 10 (1)1, (1)2, (1)3, (1)4, (3)3, (1)2, (1)1, (4)4, (1)1, (3)3, (1)2, (3)3, (1)1, (4)4, (1)1, (1)2, (3)3, (1)4, (1)3, (1)2, (1)1
- Row 11 (1)1, (1)2, (1)3, (1)4, (3)3, (1)2, (1)1, (4)4, (2)1, (5)3, (2)1, (4)4, (1)1, (1)2, (3)3, (1)4, (1)3, (1)2, (1)1
- Row 12 (1)1, (1)2, (1)3, (1)4, (3)3, (1)2, (1)1, (4)4, (3)1, (1)3, (1)2, (1)3, (3)1, (4)4, (1)1, (1)2, (3)3, (1)4, (1)3, (1)2, (1)1



SEE LARGE DIAGRAM ON PAGE 4

Row 13 (1)1, (1)2, (1)3, (1)4, (3)3, (1)2, (1)1, (3)4, (1)2, (4)1, (1)3, (4)1, (1)2, (3)4, (1)1, (1)2, (3)3, (1)4, (1)3, (1)2, (1)1
Row 14 (1)1, (1)2, (1)3, (1)4, (2)3, (1)1, (1)2, (9)1, (1)2, (9)1, (1)2, (1)1, (2)3, (1)4, (1)3, (1)2, (1)1
Row 15 (1)1, (1)2, (1)3, (1)4, (1)3, (1)1, (1)5, (1)2, (1)1, (1)3, (4)1, (1)2, (2)5, (1)1, (2)5, (1)2, (4)1, (1)3, (1)1, (1)2, (1)5, (1)1, (1)3, (1)4, (1)3, (1)2, (1)1
Row 16 (1)1, (1)2, (1)3, (1)4, (1)1, (2)5, (1)2, (1)1, (2)3, (3)1, (2)5, (1)1, (1)4, (1)1, (2)5, (3)1, (2)3, (1)1, (1)2, (2)5, (1)1, (1)4, (1)3, (1)2, (1)1
Row 17 (1)1, (1)2, (1)3, (1)1, (3)5, (1)2, (1)1, (3)3, (2)1, (1)5, (1)1, (3)4, (1)1, (1)5, (2)1, (3)3, (1)1, (1)2, (3)5, (1)1, (1)3, (1)2, (1)1
Row 18 (1)1, (1)2, (1)1, (1)2, (3)5, (1)2, (1)1, (1)2, (1)3, (1)2, (1)3, (1)2, (1)1, (2)4, (1)2, (2)4, (1)1, (1)2, (1)3, (1)2, (1)3, (1)2, (1)1, (1)2, (3)5, (1)2, (1)1, (1)2, (1)1
Row 19 (1)1, (1)2, (1)3, (1)1, (3)5, (1)2, (1)1, (3)3, (2)1, (1)5, (1)1, (3)4, (1)1, (1)5, (2)1, (3)3, (1)1, (1)2, (3)5, (1)1, (1)3, (1)2, (1)1
Row 20 (1)1, (1)2, (1)3, (1)4, (1)1, (2)5, (1)2, (1)1, (2)3, (3)1, (2)5, (1)1, (1)4, (1)1, (2)5, (3)1, (2)3, (1)1, (1)2, (2)5, (1)1, (1)4, (1)3, (1)2, (1)1
Row 21 (1)1, (1)2, (1)3, (1)4, (1)3, (1)1, (1)5, (1)2, (1)1, (1)3, (4)1, (1)2, (2)5, (1)1, (2)5, (1)2, (4)1, (1)3, (1)1, (1)2, (1)5, (1)1, (1)3, (1)4, (1)3, (1)2, (1)1
Row 22 (1)1, (1)2, (1)3, (1)4, (2)3, (1)1, (1)2, (9)1, (1)2, (9)1, (1)2, (1)1, (2)3, (1)4, (1)3, (1)2, (1)1
Row 23 (1)1, (1)2, (1)3, (1)4, (3)3, (1)2, (1)1, (3)4, (1)2, (4)1, (1)3, (4)1, (1)2, (3)4, (1)1, (1)2, (3)3, (1)4, (1)3, (1)2, (1)1
Row 24 (1)1, (1)2, (1)3, (1)4, (3)3, (1)2, (1)1, (4)4, (3)1, (1)3, (1)2, (1)3, (3)1, (4)4, (1)1, (1)2, (3)3, (1)4, (1)3, (1)2, (1)1
Row 25 (1)1, (1)2, (1)3, (1)4, (3)3, (1)2, (1)1, (4)4, (2)1, (5)3, (2)1, (4)4, (1)1, (1)2, (3)3, (1)4, (1)3, (1)2, (1)1
Row 26 (1)1, (1)2, (1)3, (1)4, (3)3, (1)2, (1)1, (4)4, (1)1, (3)3, (1)2, (3)3, (1)1, (4)4, (1)1, (1)2, (3)3, (1)4, (1)3, (1)2, (1)1
Row 27 (1)1, (1)2, (1)3, (1)4, (3)3, (1)2, (10)1, (1)2, (3)3, (1)4, (1)3, (1)2, (1)1
Row 28 (1)1, (1)2, (1)3, (1)4, (3)3, (2)1)2, (3)3, (1)4, (1)3, (1)2, (1)1
Row 29 (1)1, (1)2, (1)3, (1)4, (9)3, (1)1, (7)5, (1)1, (9)3, (1)4, (1)3, (1)2, (1)1
Row 30 (1)1, (1)2, (1)3, (1)4, (10)3, (1)1, (5)5, (1)1, (10)3, (1)4, (1)3, (1)2, (1)1
Row 31 (1)1, (1)2, (1)3, (1)4, (11)3, (1)1, (3)5, (1)1, (11)3, (1)4, (1)3, (1)2, (1)1
Row 32 (1)1, (1)2, (1)3, (13)4, (1)1, (1)2, (1)1, (13)4, (1)3, (1)2, (1)1
Row 33 (1)1, (1)2, (15)3, (1)1, (15)3, (1)2, (1)1
Row 34 (1)1, (33)2, (1)1
Row 35 (35)1

FINISH TOP EDGE

Cut piece from the loom leaving warp threads as long as possible.

One by one thread each warp thread at the top of the piece on a needle and weave into the piece for several rows, leaving a clean, top edge.

FRINGES

There are 37 warp threads used to make 29 fringes; fringes with cubes are strung on 2 threads, the others are single threads. Each fringe is secured with a gold bead tip; knot the gold bead like a stopper bead but make several passes and half hitch knots between the gold beads and the cubes. Weave each remaining tail back up the strand before trimming.

TIP: Make sure to push the woven rows snug together before adding fringes. Make sure to snug each fringe up to the last woven row before knotting the tip beads.

Fringe 1 (two threads): 6(1), 1 cube, 6(1), 4(4), 6(1), 1 cube, 1(2)
Fringe 2: 6(1), 4(3), 6(1), 4(4), 6(1), 4(5), 6(1), 1(2)
Fringe 3: 6(1), 4(3), 6(1), 4(4), 6(1), 4(5), 6(1), 1(2)
Fringe 4: 6(1), 4(3), 6(1), 4(4), 6(1), 4(5), 6(1), 1(2)
Fringe 5 (two threads): 6(1), 4(3), 6(1), 4(4), 6(1), 4(5), 6(1), 1 cube, 1(2)
Fringe 6: 6(1), 4(3), 6(1), 4(4), 6(1), 4(5), 6(1), 4(4), 6(1), 1(2)
Fringe 7: 6(1), 4(3), 6(1), 4(4), 6(1), 4(5), 6(1), 4(4), 6(1), 1(2)
Fringe 8 (use two threads): 6(1), 4(3), 6(1), 1 cube, 6(1), 4(5), 6(1), 4(4), 6(1), 1(2)
Fringe 9: 6(1), 4(3), 6(1), 4(4), 6(1), 4(5), 6(1), 4(4), 6(1), 1(2)
Fringe 10: 6(1), 4(3), 6(1), 4(4), 6(1), 4(5), 6(1), 4(4), 6(1), 1(2)
Fringe 11: 6(1), 4(3), 6(1), 4(4), 6(1), 4(5), 6(1), 4(4), 6(1), 1(2)
Fringe 12: 6(1), 4(3), 6(1), 4(4), 6(1), 4(5), 6(1), 4(4), 6(1), 1(2)
Fringe 13: 6(1), 4(3), 6(1), 4(4), 6(1), 4(5), 6(1), 4(4), 6(1), 1(2)
Fringe 14: 6(1), 4(3), 6(1), 4(4), 6(1), 4(5), 6(1), 4(4), 6(1), 1(2)
Fringe 15 (two threads): 6(1), 4(4), 6(1), 1 cube, 6(1), 4(4), 6(1), 1 cube, 1(2).
Fringe 16: 6(1), 4(3), 6(1), 4(4), 6(1), 4(5), 6(1), 4(4), 6(1), 1(2)
Fringe 17: 6(1), 4(3), 6(1), 4(4), 6(1), 4(5), 6(1), 4(4), 6(1), 1(2)
Fringe 18: 6(1), 4(3), 6(1), 4(4), 6(1), 4(5), 6(1), 4(4), 6(1), 1(2)
Fringe 19: 6(1), 4(3), 6(1), 4(4), 6(1), 4(5), 6(1), 4(4), 6(1), 1(2)
Fringe 20: 6(1), 4(3), 6(1), 4(4), 6(1), 4(5), 6(1), 4(4), 6(1), 1(2)
Fringe 21: 6(1), 4(3), 6(1), 4(4), 6(1), 4(5), 6(1), 4(4), 6(1), 1(2)

Fringe 22 (use two threads): 6(1), 4(3), 6(1), 1 cube, 6(1), 4(5), 6(1), 4(4), 6(1), 1(2)
Fringe 23: 6(1), 4(3), 6(1), 4(4), 6(1), 4(5), 6(1), 4(4), 6(1), 1(2)
Fringe 24: 6(1), 4(3), 6(1), 4(4), 6(1), 4(5), 6(1), 4(4), 6(1), 1(2)
Fringe 25 (two threads): 6(1), 4(3), 6(1), 4(4), 6(1), 4(5), 6(1), 1 cube, 1(2)
Fringe 26: 6(1), 4(3), 6(1), 4(4), 6(1), 4(5), 6(1), 1(2)
Fringe 27: 6(1), 4(3), 6(1), 4(4), 6(1), 4(5), 6(1), 1(2)
Fringe 28: 6(1), 4(3), 6(1), 4(4), 6(1), 4(5), 6(1), 1(2)
Fringe 29 (two threads): 6(1), 1 cube, 6(1), 4(4), 6(1), 1 cube, 1(2)

BAIL

String 1(1), 7(3) and 1(1). Repeat this color sequence working in square stitch for a total of 6 rows. Square stitch into a tube. Square stitch the tube to the top of the pendant, centered at the top of the pendant. Weave the remaining thread carefully into several rows in the quilt block to secure those rows together where the bail will hold the most weight of the pendant. Trim.

STRING NECKLACE

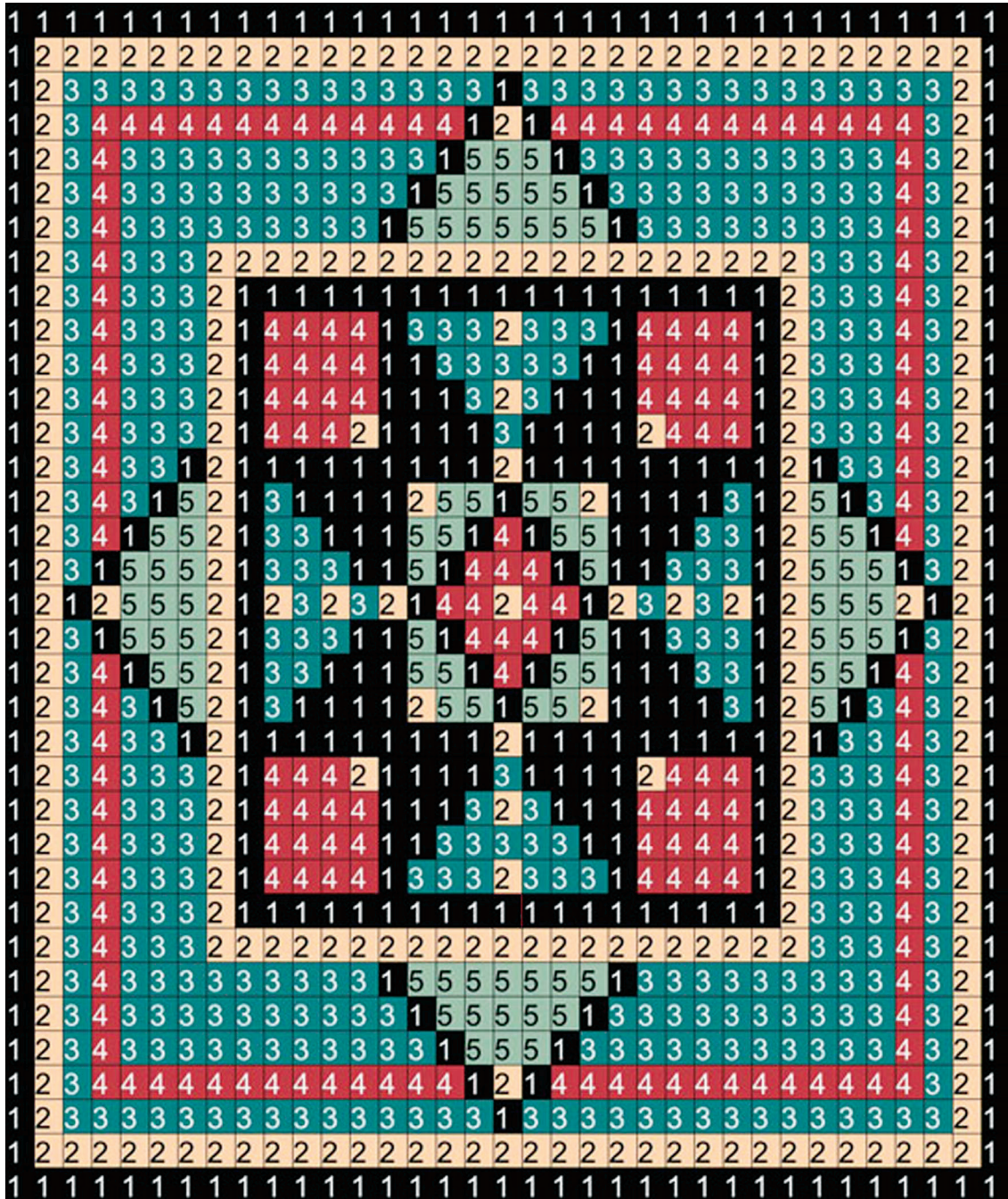
Place a bead stopper on one end of a 28" length of beading wire. Adjust wire length as needed for different lengths, leaving enough wire to complete the crimping and clasp. String 1(2), 10(1) and 1(2). Push beads into the bail tube. The gold beads should show on each side; the black beads are just to fill the tube.

String the following sequence 3 times for a 24" necklace (plus 5" fringed pendant): 1 cube, 6(4), 1 cube, 6(1), 1 cube, 6(5), 1 cube, 6(1), 1 cube, 6(3), 1 cube, 6(1), 1 cube, 6(4).

Place a bead stopper on the strung strand and repeat the stringing sequence on the other strand. Add or subtract sections equally from each strand for different lengths.

TIP: Always end stringing with seed beads. Otherwise, the crimp tubes will slide into the cube beads and frustrate your crimp efforts.

Use the wire guardians and crimp tubes to string your clasp. Cover the crimps with crimp covers.



QUILT BOX DIAGRAM