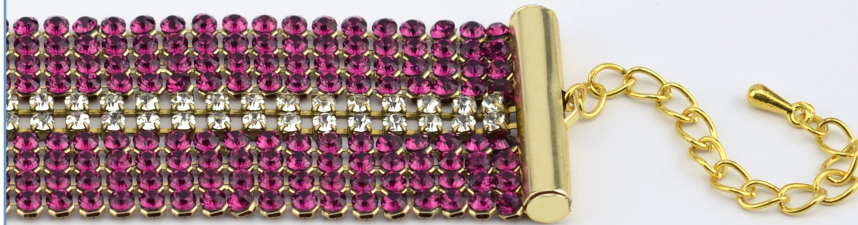


## DESIGN WORKSHOP

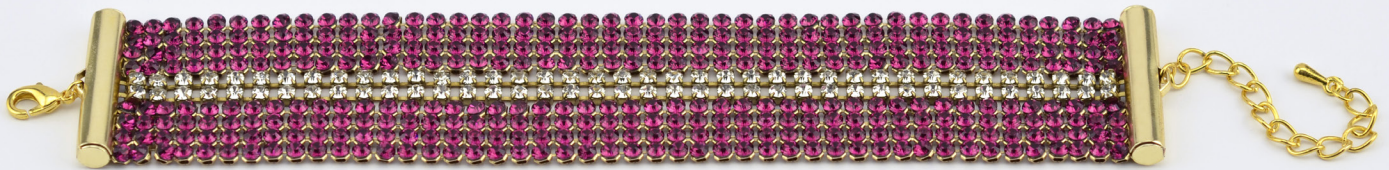
### CRYSTAL MESH BRACELET

By: Meredith Roddy



### Materials

- 324A-062 Extension Clasp, 2 In (5.08 Cm), Lobster-claw, Slideconnector .79 In (20 Mm), Gold Color
- 2X 6" Pieces Of 3Mm Cup Chain
- 2X 6" Pieces Of Swarovski Elements 1/2" Crystal Mesh, Or Equivalent Cup Chain



1. Slide into one tube 1 piece of Crystal Mesh, 2 pieces of cup chain and one piece of Crystal Mesh. Close the Tube.

2. Repeat on the other tube.