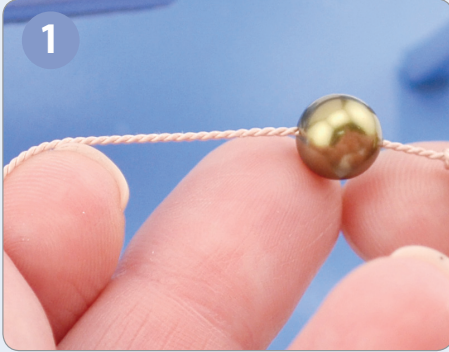


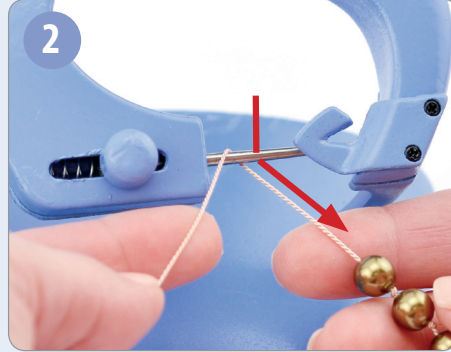
Beadalon®

Knot-a-Bead

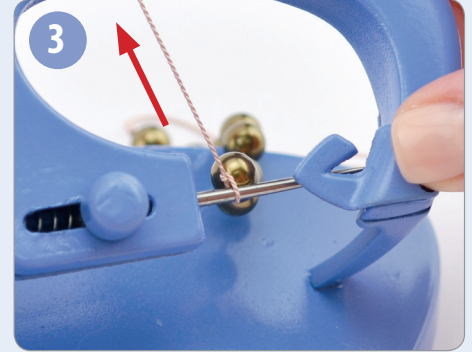
KNOT-A-BEAD INSTRUCTIONS



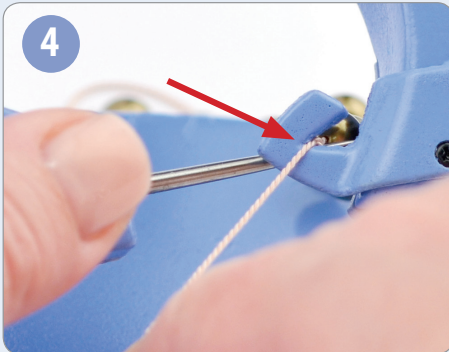
1
Begin by adding a clasp or by knotting one end of your silk cord. String beads onto the cord and slide the first bead up against the knot.



2
Drop the bead **BEHIND** the awl and pull it through the underneath opening.



3
Next, tie an overhand knot and drop the bead back **BEHIND** the awl just as you did in step 2. Pull up on the cord to snug the knot.



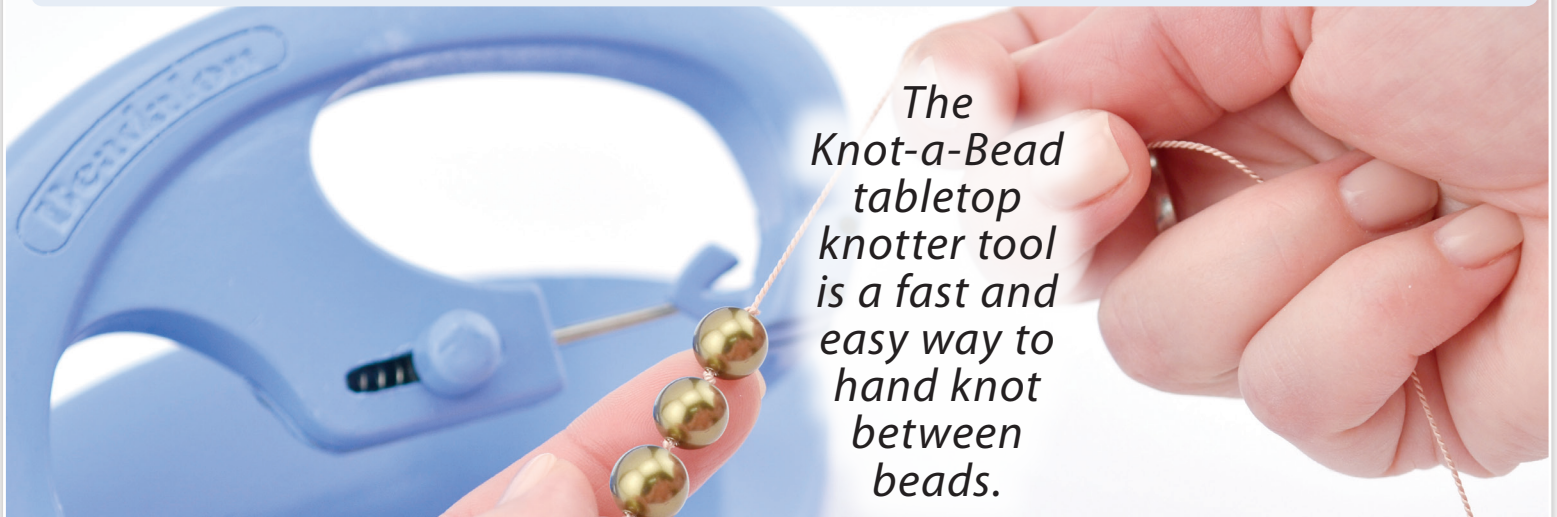
4
Pull the cord through the **YOKE** and apply medium pressure.



5
While still applying pressure to the knot/cord, place your thumb on the button and pull to the left. This releases the knot from the awl. Simply repeat these steps until you reach the desired length of your design.



6
Each bead is perfectly knotted and tightly positioned!



The Knot-a-Bead tabletop knoter tool is a fast and easy way to hand knot between beads.